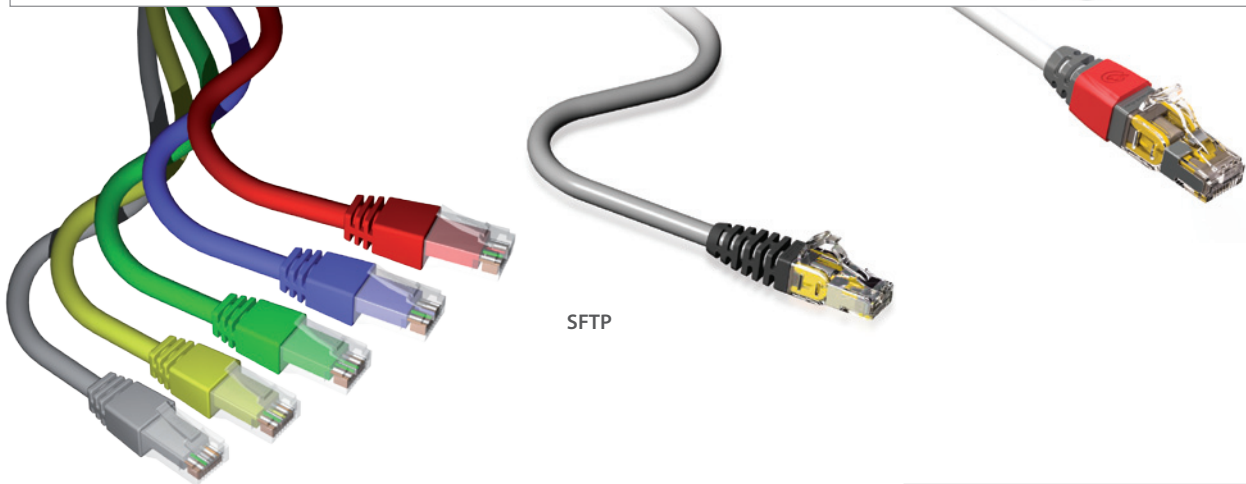


CAT6PLUS



SFTP

UTP

Compliant with ISO/IEC 61935-2

Brand-Rex Copper Patch Cords - Cat6Plus
Category 6 Patch Cords

Part Number Format

C6C-PC-A-bbb-cde-F						
A - Cord Type	bbb - Cord Length	cde - Colour Scheme			F - Speciality Tag	
U 24AWG UTP	010 1 metre	(c) Cable	(d) Boot 1	(e) Boot 2	S Solid	
S 27AWG SFTP	020 2 metre	1 Red	1 Red	1 Red	X Crossover	
	030 3 metre	4 Blue	4 Blue	4 Blue	BB Blade style	
	050 5 metre	5 Green	5 Green	5 Green	H Standard	
	Additional lengths on request	6 Yellow	6 Yellow	6 Yellow		
		8 Grey	8 Grey	8 Grey		
Additional colours on request - including Black (2), White (3) and Violet(7).						

PRODUCT DESCRIPTION

Brand-Rex Cat6Plus patch cords enable you to get the optimum performance from your cabling system. Our factory made and tested patch cords offer you guaranteed quality, and ensure that your system avoids the performance degradation which inferior alternatives will give you at high data rates. All patch cords are supplied with boots and ID tag.

Independent 3rd Party Certification (3P)

Packaging

- Individually packed in branded, easy tear bags
- Individual bagged parts, bulk packed in bags of 10 for standard cords

Product Part Numbering

	Red	Blue	Green	Yellow	Grey
24 AWG UTP - 1.0m	C6CPCU010-111BB	C6CPCU010-444BB	C6CPCU010-555BB	C6CPCU010-666BB	C6CPCU010-888BB
24 AWG UTP - 2.0m	C6CPCU020-111BB	C6CPCU020-444BB	C6CPCU020-555BB	C6CPCU020-666BB	C6CPCU020-888BB
24 AWG UTP - 3.0m	C6CPCU030-111BB	C6CPCU030-444BB	C6CPCU030-555BB	C6CPCU030-666BB	C6CPCU030-888BB
24 AWG UTP - 5.0m	C6CPCU050-111BB	C6CPCU050-444BB	C6CPCU050-555BB	C6CPCU050-666BB	C6CPCU050-888BB
27 AWG SFTP - 1.0m	C6CPCS010-188HB	C6CPCS010-488HB	C6CPCS010-588HB	C6CPCS010-688HB	C6CPCS010-888HB
27 AWG SFTP - 2.0m	C6CPCS020-188HB	C6CPCS020-488HB	C6CPCS020-588HB	C6CPCS020-688HB	C6CPCS020-888HB
27 AWG SFTP - 3.0m	C6CPCS030-188HB	C6CPCS030-488HB	C6CPCS030-588HB	C6CPCS030-688HB	C6CPCS030-888HB
27 AWG SFTP - 5.0m	C6CPCS050-188HB	C6CPCS050-488HB	C6CPCS050-588HB	C6CPCS050-688HB	C6CPCS050-888HB

Non standard colour and length options are available to order on request.

Product Part Numbering

Description	Qty	Part Number
SFTP Patch Cord Clip – Red	100	MMPCCHB001
SFTP Patch Cord Clip – Black	100	MMPCCHB002
SFTP Patch Cord Clip – White	100	MMPCCHB003
SFTP Patch Cord Clip – Blue	100	MMPCCHB004
SFTP Patch Cord Clip – Green	100	MMPCCHB005
SFTP Patch Cord Clip – Yellow	100	MMPCCHB006